



# NAVÍO

PUERTO SERENO  
AT CAP CANA



(+1) 809 669 3958 - (+1) 829 471 5568

[www.naviodr.com](http://www.naviodr.com)

[@naviopuertosereno](https://www.instagram.com/naviopuertosereno)

[info@naviodr.com](mailto:info@naviodr.com)



CAPCANA  
REPÚBLICA DOMINICANA

*Ciudad Destino*

## PLAN MAESTRO MASTER PLAN

OFICINA DE INFORMACIÓN Y VENTAS

INFORMATION AND SALES CENTER

HERITAGE SCHOOL

ANCORA CAP CANA

TRIS PALLADIUM HOTEL

MARINA CAP CANA

SECRET CAP CANA

HYATT ZIVA & HYATT ZILARA

MARGARITAVILLE ISLAND RESERVE

SANCTUARY CAP CANA

ST. REGIS RESORT & RESIDENCES CAP CANA

PUNTA ESPADA GOLF COURSE

HOTEL EDEN ROC CAP CANA

EDEN ROC CAP CANA BEACH CLUB

LOS ESTABLOS

SCAPE PARK



### ZONA RESIDENCIAL

1. CIUDAD LAS CANAS
2. FARALLON ESTATES
3. LAS LAGUNAS
4. LOS ESTABLOS
5. FARALLON PUNTA ESPADA
6. CALETON ESTATES
7. CALETON VILLAS
8. YARARI
9. LAS PALMAS
10. PUNTA MAJAGUA
11. PUNTA CAYUCO
12. GREEN VILLAGE
13. GOLDEN BEAR LODGE
14. LAS IGUANAS HOMESITES
15. LAS IGUANAS GOLF RESIDENCES
16. FAIRWAY HOMESITES
17. THE LEGENDS
18. EL LAGO
19. LAGOON ESTATES
20. JUANILLO BAY
21. PUNTA PALMERA
22. AQUAMARINA
23. OCEAN 21
24. ISLA GRANDE
25. FUNDADORES
26. FISHING LODGE
27. ISLA DEL PUERTO
28. RACQUET VILLAGE
29. PUNTA MARAVILLA
30. VILLAS MARINA

### PROYECTOS EN VENTA

31. VERMARE
32. 7 MARES
33. DEZENOVE
34. GREEN WOOD
35. HARBOR BAY
36. OLEA
37. MARINA GARDEN
38. MARELAGO
39. CALETON RESIDENCES

Location

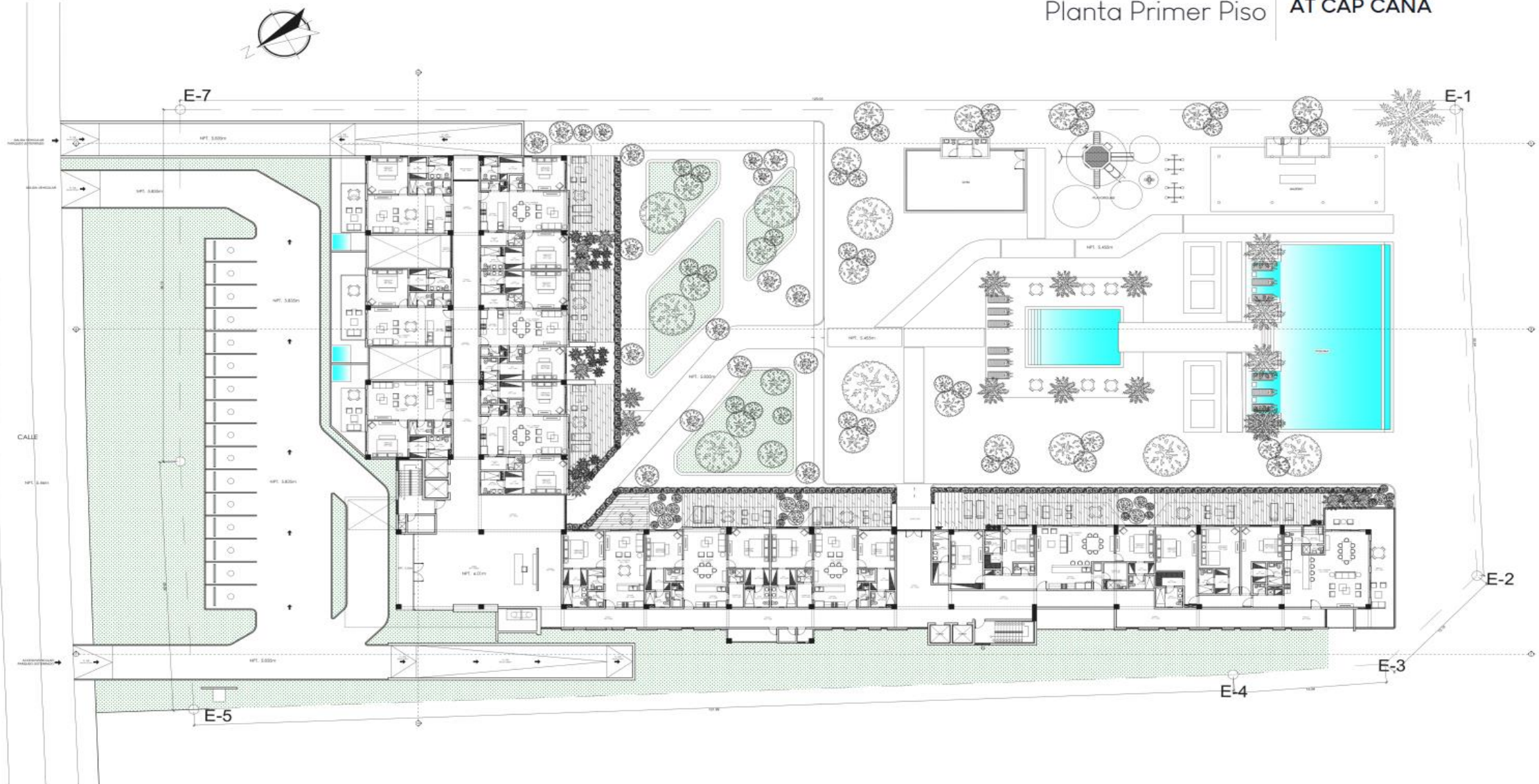
Ubicación



Preliminary views, subject to changes.  
Vistas preliminares (Conceptuales) Sujetas a cambios

First Floor  
Planta Primer Piso

NAVÍO PUERTO SERENO  
AT CAP CANA



Preliminary views, subject to changes.  
Vistas preliminares (Conceptuales) Sujetas a cambios

# Amenities

## Amenidades



Children's area  
Area infantil



BBQ area  
Area de BBQ



Gym  
Gimnasio



Parking for visitors  
Estacionamiento  
para visitantes



4 elevators  
(12 people capacity)  
4 ascensores  
(capacidad para 12 personas)



Double height lobby  
Lobby de doble altura



Infinity pool  
Piscina infinita



Children's pool  
Piscina infantil

Preliminary views, subject to changes.  
Vistas preliminares (Conceptuales) Sujetas a cambios

NAVÍO PUERTO SERENO  
AT CAP CANA

With a modern, refined, and elegant design, Navío Puerto Sereno at Cap Cana proposes importing the luxury of a boutique hotel to the intimacy of a private residence.

Con un diseño moderno, refinado y elegante, Navío Puerto Sereno en Cap Cana propone importar el lujo de un hotel boutique a la intimidad de una residencia privada.

Eliminatory views subject to changes.  
Vistas preliminares (Conceptuales) sujetas a cambios

1 Habitación.....20 apartamentos  
1 Habitación(penthouse).....4 apartamentos  
2 Habitaciones.....28 apartamentos  
2 Habitaciones (penthouse).....6 apartamentos  
3 Habitaciones.....10 apartamentos  
3 Habitaciones (penthouse).....2 apartamentos

1 Bedrooms.....20 apartments  
1 Bedrooms (penthouse).....4 apartments  
2 Bedrooms.....28 apartments  
2 Bedrooms (penthouse).....6 apartments  
3 Bedrooms.....10 apartments  
3 Bedrooms (penthouse).....2 apartments

Preliminary views, subject to changes.  
Vistas preliminares (Conceptuales) Sujetas a cambios




NAVÍO PUERTO SERENO  
AT CAP CANA



Preliminary views, subject to changes.  
Vistas preliminares (Conceptuales) Sujetas a cambios



An aerial night view of a modern apartment complex. The building is illuminated from within, showing multiple floors with balconies and large windows. In the foreground, a large, rectangular swimming pool is lit up with a bright blue glow. The pool is surrounded by several palm trees and lounge furniture. The sky is dark, and a small orange light is visible in the upper right corner.

Enjoy the many premium amenities that elevate the experience of living in front of the Caribbean Sea and the profitability of these sophisticated apartments.

Disfruta de abundantes amenidades premium que elevan la experiencia de vivir frente al Mar Caribe y la rentabilidad de estos sofisticados apartamentos.

Preliminary views, subject to changes.  
Vistas preliminares (Conceptuales) Sujetas a cambios

NAVÍO PUERTO SERENO  
AT CAP CANA

# Forma de Pago



**US\$5,000.00** Reserva

**20%** con la firma del contrato

**40%** durante la construcción

**40%** contra entrega verano 2025